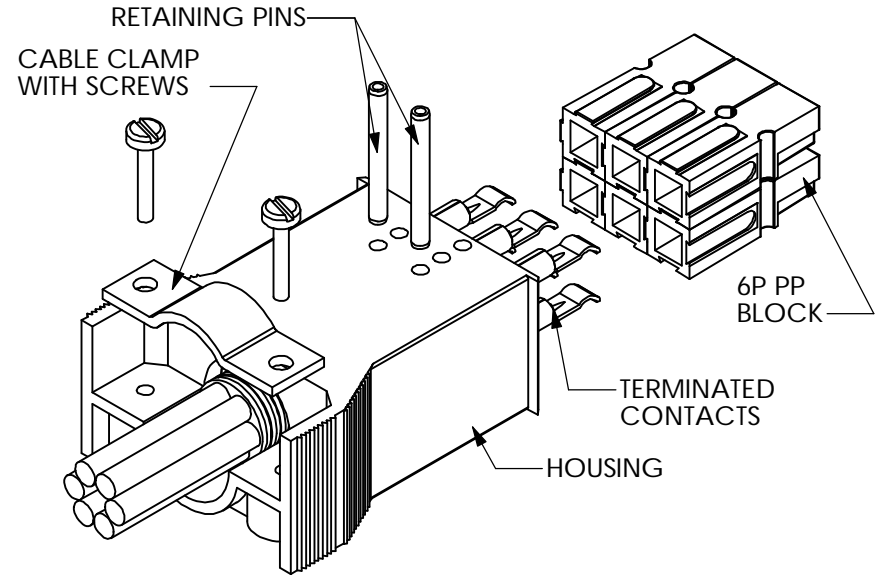
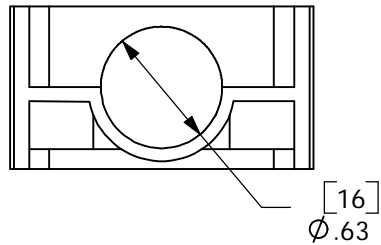
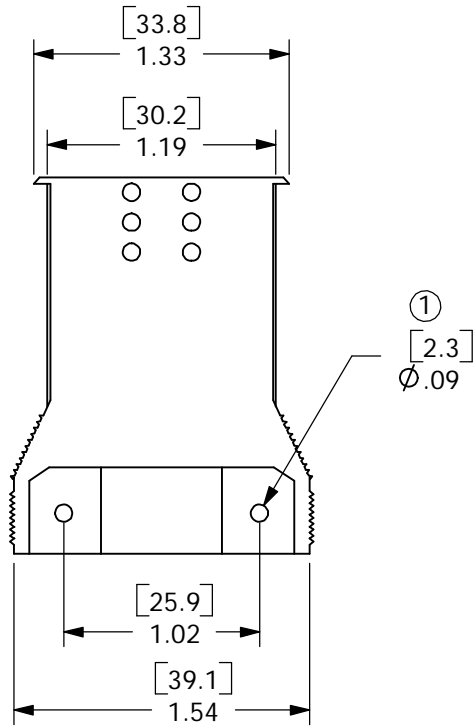
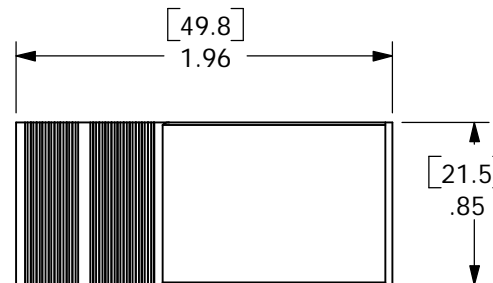


THE INFORMATION CONTAINED IN THIS DRAWING IS THE SOLE PROPERTY OF ANDERSON POWER PRODUCTS. ANY REPRODUCTION IN PART OR WHOLE WITHOUT THE WRITTEN PERMISSION OF ANDERSON POWER PRODUCTS IS PROHIBITED.

DATE	12/16/04
BY:	DJD
DESCRIPTION OF CHANGES	ECRN 13769: Ø.09 WAS Ø.08
REV.	1



TYPICAL ASSEMBLY- REFER TO CATALOG FOR AVAILABLE CONFIGURATIONS



ITEM NO.		PART OR IDENTIFYING NO.		NOMENCLATURE OR DESCRIPTION		MATERIAL SPECIFICATION		QTY REQD					
COPYRIGHT 1999 ANDERSON POWER PRODUCTS. ALL RIGHTS RESERVED. UNAUTHORIZED REPRODUCTION HEREBY PROHIBITED.													
DIMENSIONS ARE IN INCHES DIMENSIONS IN PARENTHESES [ ] ARE IN MILLIMETERS  TOLERANCES ARE: 2PL- ±.02 [±.5]				CAD GENERATED DRAWING, DO NOT MANUALLY UPDATE		ANDERSON POWER PRODUCTS							
				APPROVALS						DATE			
				DRAWN		CMS		8/4/99		CATALOG NUMBER 1461G2 2X3 POWERPOLE PAK PLUG WITHOUT LATCH			
				CHECKED		DJD		8/5/99					
RESP ENG		UFN		8/13/99									
MATERIALS: POLYCARBONATE		MFG ENG		CHB		8/5/99		SIZE A SPECIFICATION: 114166S2		REV. 1			
		QUAL ENG		RO		8/10/99							
FINISH		NONE				SCALE NONE		CADFILES/01092		SHEET 1 OF 1			
NEXT ASSY		USED ON		APPLICATION		DO NOT SCALE DRAWING							
5		↑		4		1		3		1			
								2		1			