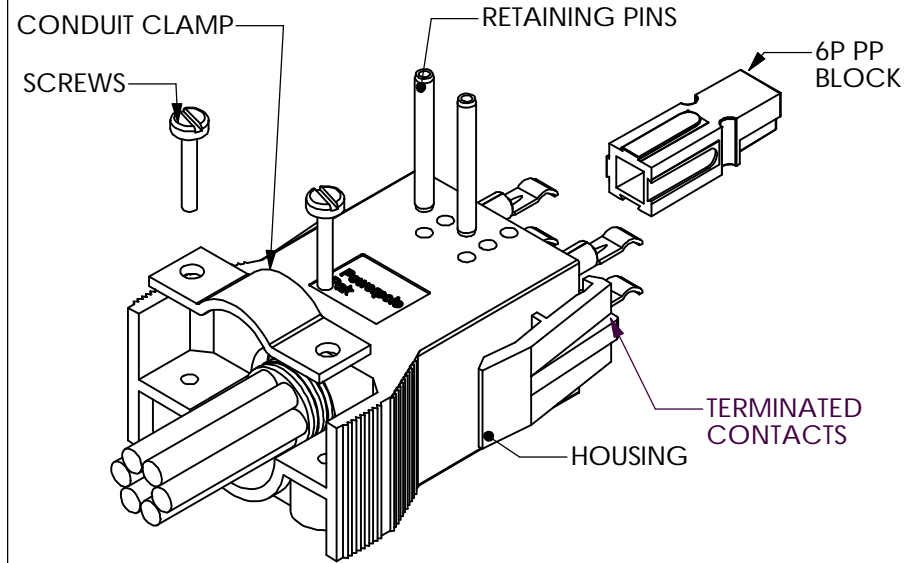
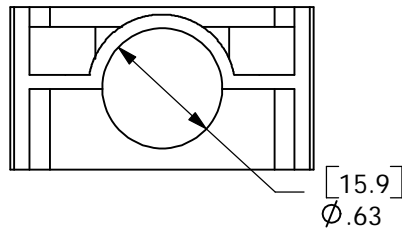
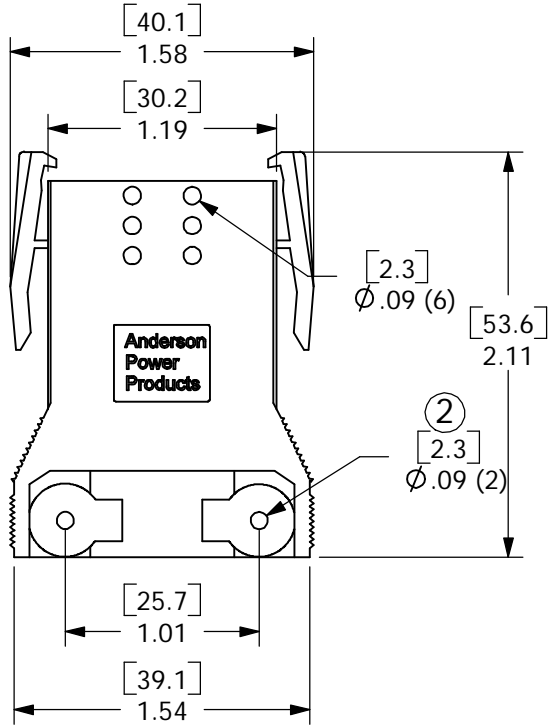
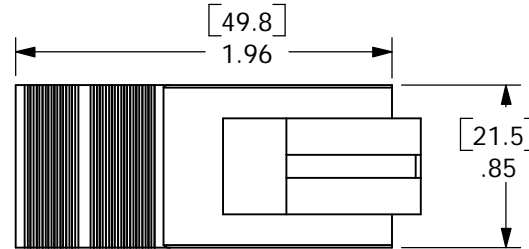


THE INFORMATION CONTAINED IN THIS DRAWING IS THE SOLE PROPERTY OF ANDERSON POWER PRODUCTS. ANY REPRODUCTION IN PART OR WHOLE WITHOUT THE WRITTEN PERMISSION OF ANDERSON POWER PRODUCTS IS PROHIBITED.

DATE	BY:	DESCRIPTION OF CHANGES
10/23/01	CMS	ECRN 13433
12/16/04	DJD	ECRN 13769: ϕ .09 WAS ϕ .08
REV.	1	2



TYPICAL ASSEMBLY- REFER TO CATALOG FOR AVAILABLE CONFIGURATIONS



ANDERSON POWER PRODUCTS RESERVES THE RIGHT TO ALTER PRODUCT TYPES, THEIR TECHNICAL DATA, DIMENSION, STYLE AND ACCESSORIES WITHOUT PRIOR NOTIFICATION.

ITEM NO.	PART OR IDENTIFYING NO.	NOMENCLATURE OR DESCRIPTION	MATERIAL SPECIFICATION	QTY REQD
COPYRIGHT 1999 ANDERSON POWER PRODUCTS. ALL RIGHTS RESERVED. UNAUTHORIZED REPRODUCTION HEREBY PROHIBITED.				
DIMENSIONS ARE IN INCHES DIMENSIONS IN PARENTHESES [] ARE IN MILLIMETERS TOLERANCES ARE: 2PL- \pm .02 [\pm .5]		CAD GENERATED DRAWING, DO NOT MANUALLY UPDATE		ANDERSON POWER PRODUCTS CATALOG NUMBER 1460G2 2X3 POWERPOLE PAK HOUSING PLUG WITH LATCH
		APPROVALS	DATE	
		DRAWN CMS	7/27/99	
		CHECKED DJD	10/9/01	
MATERIALS: POLYCARBONATE		RESP ENG UFN	10/22/01	SIZE A SPECIFICATION: 114165S2
		MFG ENG CHB	10/21/01	
FINISH NONE		QUAL ENG RPO	9/16/99	REV. 2
NEXT ASSY	USED ON	SCALE NONE CADFILES/01089 SHEET 1 OF 1		
APPLICATION	DO NOT SCALE DRAWING			