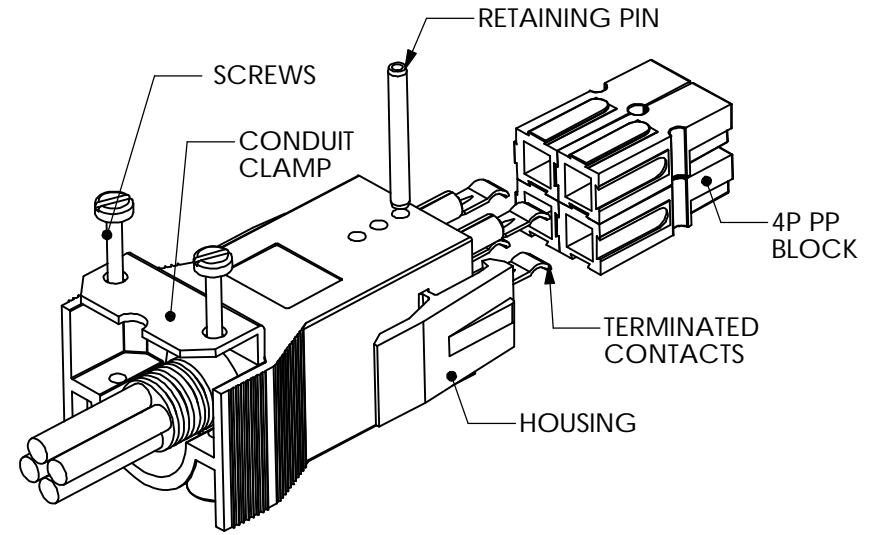
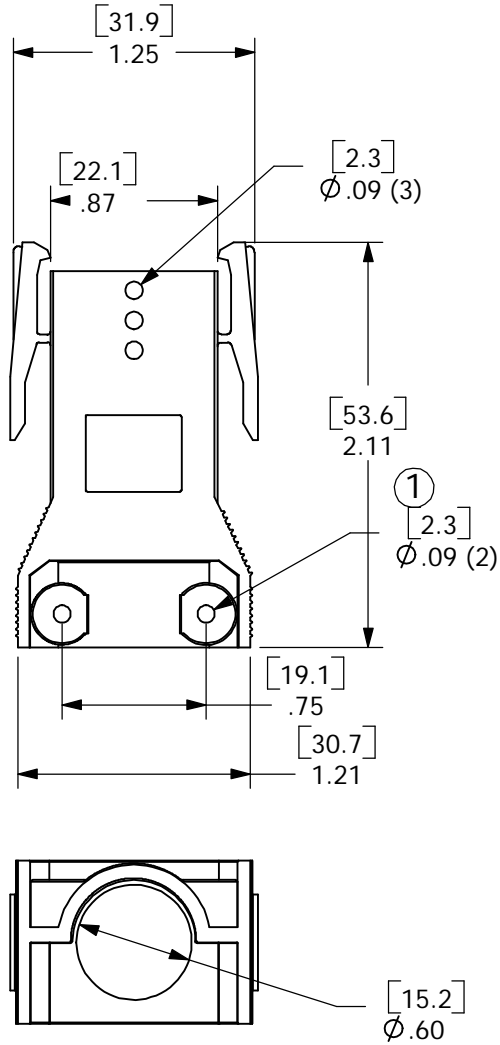
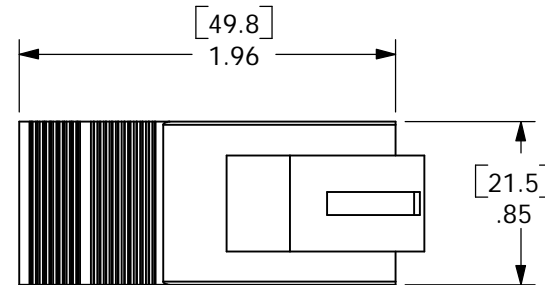


THE INFORMATION CONTAINED IN THIS DRAWING IS THE SOLE PROPERTY OF ANDERSON POWER PRODUCTS. ANY REPRODUCTION IN PART OR WHOLE WITHOUT THE WRITTEN PERMISSION OF ANDERSON POWER PRODUCTS IS PROHIBITED.

REV.	DESCRIPTION OF CHANGES	BY:	DATE
1	ECRN 13769: ϕ .09 WAS ϕ .08	DJD	12/16/04



TYPICAL ASSEMBLY- REFER TO CATALOG FOR AVAILABLE CONFIGURATIONS



ITEM NO.	PART OR IDENTIFYING NO.	NOMENCLATURE OR DESCRIPTION		MATERIAL SPECIFICATION	QTY REQD				
COPYRIGHT 1999 ANDERSON POWER PRODUCTS. ALL RIGHTS RESERVED. UNAUTHORIZED REPRODUCTION HEREBY PROHIBITED.									
DIMENSIONS ARE IN INCHES DIMENSIONS IN PARENTHESES [] ARE IN MILLIMETERS TOLERANCES ARE: 2PL- ±.02 [±.5]		CAD GENERATED DRAWING, DO NOT MANUALLY UPDATE		ANDERSON POWER PRODUCTS					
		APPROVALS	DATE	CATALOG NUMBER 1460G1 2X2 POWERPOLE PAK HOUSING PLUG WITH LATCH					
DRAWN	CMS	7/27/99							
CHECKED	AC	7/27/99							
RESP ENG	UFN	7/27/99							
MATERIALS: POLYCARBONATE	NEXT ASSY USED ON	MFG ENG	CHB	8/10/99	SIZE A	SPECIFICATION: 114165S1	REV. 1		
FINISH NONE		DO NOT SCALE DRAWING		QUAL ENG	RPO	9/9/99	SCALE NONE	CADFILES/01088	SHEET 1 OF 1