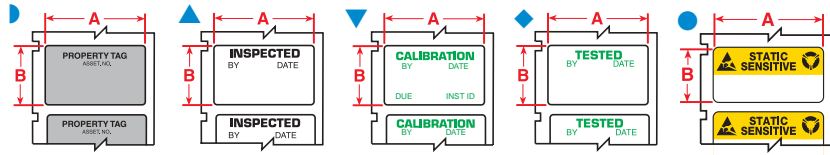


General and Industrial Identification Labels

CONTINUED

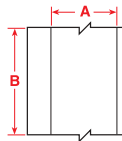
PRE-PRINTED LABELS



Permanent Glossy Polyester (B-422, B-423), Permanent Metallized Polyester (B-428), Permanent Silver Polyester (B-435), Static Dissipative Polyester (B-473)

Surface Suitability	Diagram	Part Number	Labels Per Roll	Label Dimensions		Description
				A Inch (mm)	B Inch (mm)	
◆	●	PTLSL-17-473	500	1.000 (25.40)	0.500 (12.70)	STATIC SENSITIVE
◆	▼	PTL-30-423-CALI	250	1.500 (38.10)	0.750 (19.05)	CALIBRATION
◆	▼	PTL-30-428-CALI	250	1.500 (38.10)	0.750 (19.05)	CALIBRATION
◆	◆	PTL-30-423-TEST	250	1.500 (38.10)	0.750 (19.05)	TESTED
◆	◆	PTL-30-428-TEST	250	1.500 (38.10)	0.750 (19.05)	TESTED
◆	▲	PTL-30-423-INSP	250	1.500 (38.10)	0.750 (19.05)	INSPECTED BY
◆	▲	PTL-30-428-INSP	250	1.500 (38.10)	0.750 (19.05)	INSPECTED BY
●	▶	PTL-35-422-PROP	250	1.630 (41.40)	0.750 (19.05)	PROPERTY TAG
◆	▶	PTL-35-423-PROP	250	1.630 (41.40)	0.750 (19.05)	PROPERTY TAG
◆	▶	PTL-35-428-PROP	250	1.630 (41.40)	0.750 (19.05)	PROPERTY TAG
◆	▶	PTL-35-435-PROP	250	1.630 (41.40)	0.750 (19.05)	PROPERTY TAG

GENERAL INDUSTRIAL LABELS



Permanent Glossy Polyester (B-422), Permanent Clear Polyester (B-430), Permanent Clear Rough Surface Polyester (B-432), Permanent Colored Vinyl (B-439), Ultra-Aggressive Glossy Polyester (B-483), Ultra-Aggressive Matte White Polyester (B-489)

Surface Suitability	Part Number	Labels Per Row	Label Dimensions		Maximum Characters Per Line For Font:			Maximum Lines Of Text For Font:		
			A Inch (mm)	B Inch (mm)	7	10	14	7	10	14
●	PTL-42-422	1	1.000 (25.40)	50 ft (15.24 m)	50	50	50	5	3	2
◆	PTL-42-430	1	1.000 (25.40)	50 ft (15.24 m)	50	50	50	5	3	2
◆	PTL-42-439	1	1.000 (25.40)	50 ft (15.24 m)	50	50	50	5	3	2
◆	PTL-42-439-BK	1	1.000 (25.40)	50 ft (15.24 m)	50	50	50	5	3	2
◆	PTL-42-439-BL	1	1.000 (25.40)	50 ft (15.24 m)	50	50	50	5	3	2
◆	PTL-42-439-GR	1	1.000 (25.40)	50 ft (15.24 m)	50	50	50	5	3	2
◆	PTL-42-439-OR	1	1.000 (25.40)	50 ft (15.24 m)	50	50	50	5	3	2
◆	PTL-42-439-RD	1	1.000 (25.40)	50 ft (15.24 m)	50	50	50	5	3	2
◆	PTL-42-439-YL	1	1.000 (25.40)	50 ft (15.24 m)	50	50	50	5	3	2
■	PTL-42-483	1	1.000 (25.40)	50 ft (15.24 m)	50	50	50	5	3	2
■	PTL-42-498	1	1.000 (25.40)	50 ft (15.24 m)	50	50	50	5	3	2
●	PTL-43-422	1	1.900 (48.26)	50 ft (15.24 m)	50	50	50	10	6	4
◆	PTL-43-430	1	1.900 (48.26)	50 ft (15.24 m)	50	50	50	10	6	4
◆	PTL-43-432	1	1.900 (48.26)	50 ft (15.24 m)	50	50	50	10	6	4
◆	PTL-43-439	1	1.900 (48.26)	50 ft (15.24 m)	50	50	50	10	6	4
◆	PTL-43-439-BK	1	1.900 (48.26)	50 ft (15.24 m)	50	50	50	10	6	4
◆	PTL-43-439-BL	1	1.900 (48.26)	50 ft (15.24 m)	50	50	50	10	6	4
◆	PTL-43-439-GR	1	1.900 (48.26)	50 ft (15.24 m)	50	50	50	10	6	4
◆	PTL-43-439-OR	1	1.900 (48.26)	50 ft (15.24 m)	50	50	50	10	6	4
◆	PTL-43-439-RD	1	1.900 (48.26)	50 ft (15.24 m)	50	50	50	10	6	4
◆	PTL-43-439-YL	1	1.900 (48.26)	50 ft (15.24 m)	50	50	50	10	6	4
■	PTL-43-483	1	1.900 (48.26)	50 ft (15.24 m)	50	50	50	10	6	4
■	PTL-43-489	1	1.900 (48.26)	50 ft (15.24 m)	50	50	50	10	6	4
◆	PTL-100-432	1	1.300 (33.02)	50 ft (15.24 m)	50	50	50	6	4	3
■	PTL-100-483	1	1.300 (33.02)	50 ft (15.24 m)	50	50	50	6	4	3
■	PTL-100-489	1	1.300 (33.02)	50 ft (15.24 m)	50	50	50	6	4	3
◆	PTL-101-432	1	0.250 (33.02)	50 ft (15.24 m)	50	50	50	1	0	0
■	PTL-101-483	1	0.250 (33.02)	50 ft (15.24 m)	50	50	50	1	0	0
■	PTL-101-489	1	0.250 (33.02)	50 ft (15.24 m)	50	50	50	1	0	0

- ◆ Material suitable for smooth surfaces.
- Material suitable for smooth and textured surfaces.
- Material suitable for smooth, textured and highly textured surfaces.

PORTABLE PRINTERS AND LABELS

GENERAL & INDUSTRIAL ID

TLS2200 / TLS PC LINK LABELS